


Selected works

Stipe Seselja

stipe@stipeseselja.com

+44 07535114166

A landscape photograph showing a dark, silhouetted hill against a bright, hazy sky at sunset or sunrise. The sky transitions from a pale yellow near the horizon to a soft blue at the top. A vertical teal dotted line runs along the left edge of the image.

This portfolio reflects an ongoing engagement with the human condition through design. It spans scales and contexts, from domestic space to the public realm, shaped by curiosity, responsibility, and a continuous exploration of how the built environment supports and frames life.

2025 -

STAN MADRA

📍 Dugi Otok, Dalmatia, Croatia

Ongoing
RIBA Stages 0-2
Landscape Strategy · Architecture

Lead Designer

Stan Madra is conceived as a small **agricultural estate** embedded within the dry-stone landscape of Dugi Otok.

The project combines **land restoration**, small-scale **architecture**, and **agro-tourism** centred on the cultivation of native aromatic plants and the production of essential oils and scents.

The proposal responds to terrain affected by wildfire, exploring strategies for **ecological regeneration** while reinforcing traditional spatial patterns formed by terraces and dry-stone walls. Rather than introducing a singular object, the project develops as a series of interventions emerging from the logic of the landscape itself.

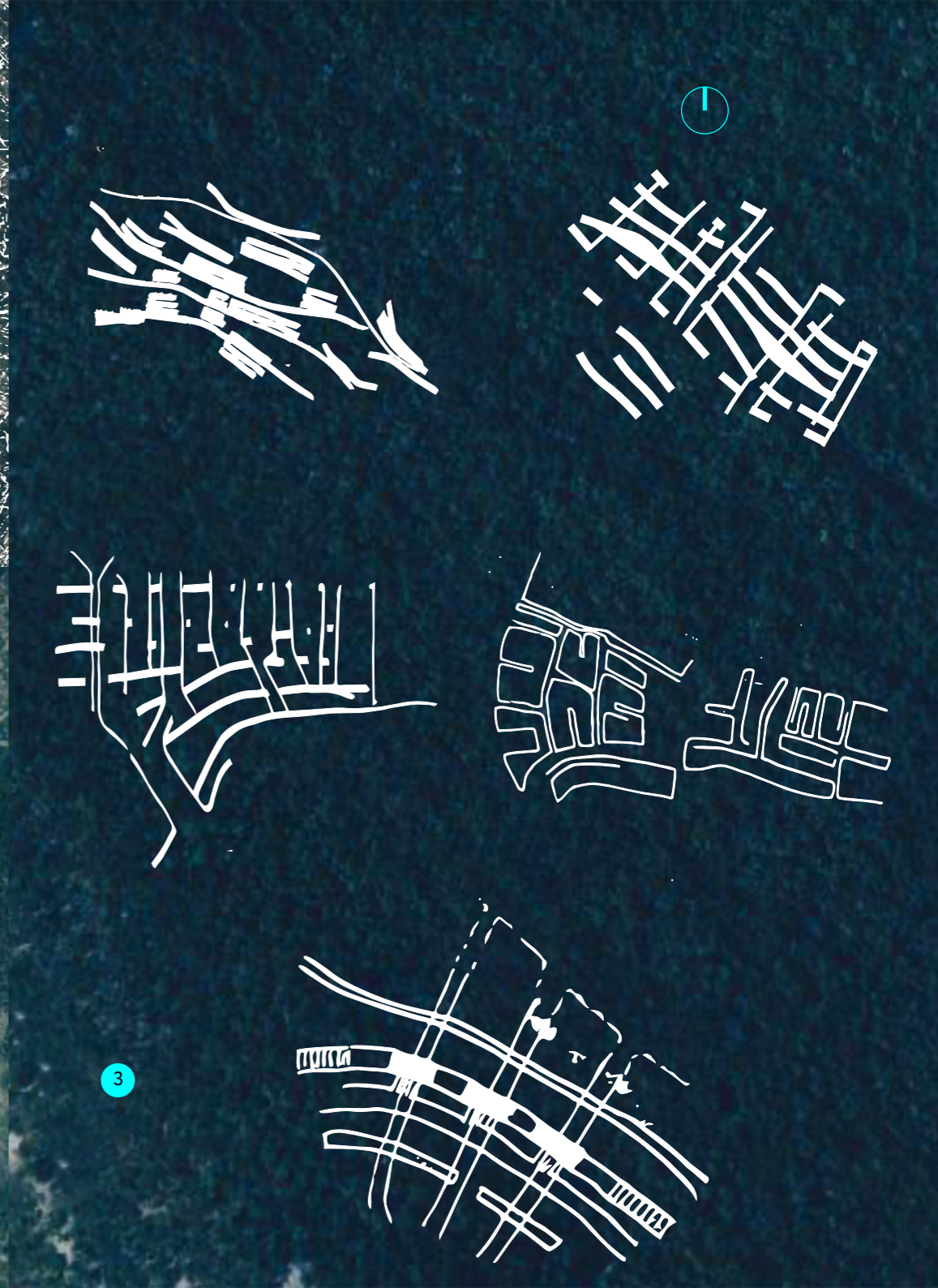


Tracing Territory

1 Territory identifies a 40,000 m² plot within the **wider island topography**, highlighting historic agricultural terraces, field structures, and dry-stone walls.

2 Landscape reading situates the plot within a terrain shaped by natural processes and recent wildfire. **Terrain** formations, drainage patterns, and **anthropogenic** traces are analysed across the wider territory.

3 Spatial interpretation presents sketch studies used to interpret spatial relationships and **latent organisational structures** within the site.



Landscapes

2025 -

STAN MADRA

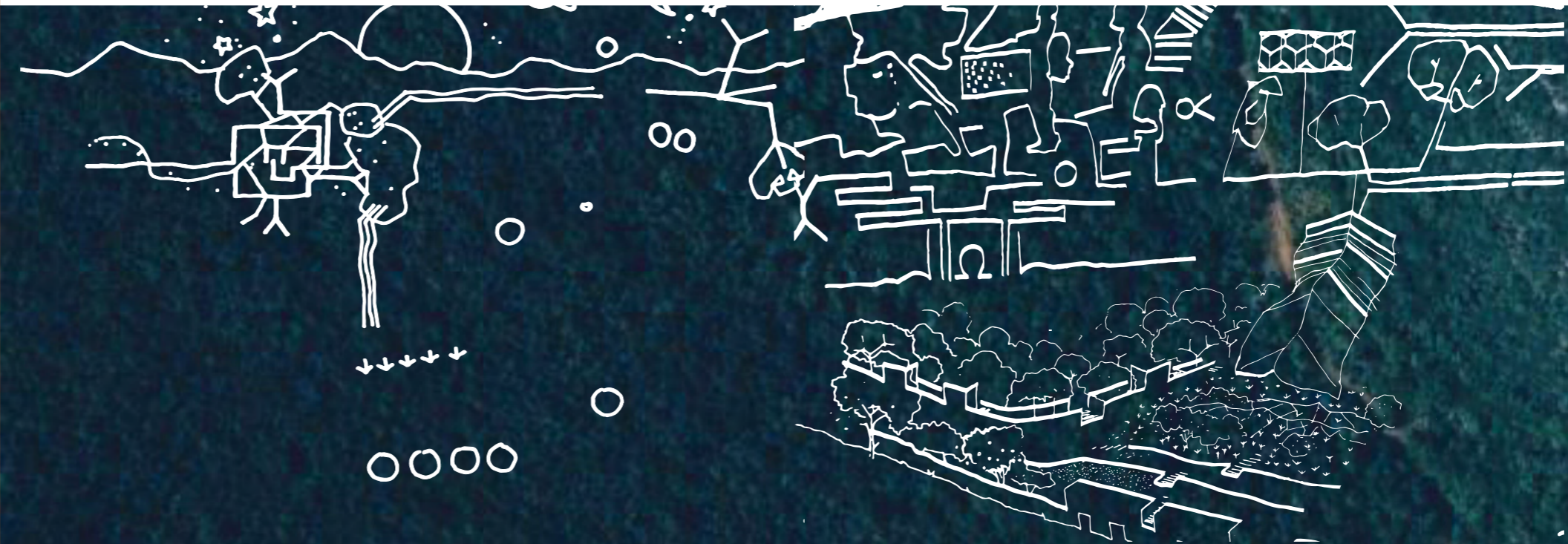
Evolving Landscape Systems

The landscape reflects layered transformations over time, shaped by long-term agricultural use and more recent monocultures introduced over the past decades.

With the decline of cultivation, these systems are now undergoing natural rewilding. Holm oak stands and mixed Mediterranean vegetation are re-establishing themselves across former terraces and fields.

These transitions are traced by reading anthropogenic structures alongside emerging ecological systems.

The project interprets this shift as an opportunity: to adapt, reuse, and extend existing patterns, replacing monoculture with a more diverse, dynamic, and **resilient landscape**.



Landscapes

2025

STAN MADRA

Landscape Typologies

Cliff-edge habitat

Holm oak stands

Diverse agro-ecological mosaic

Architecture emerging from dry-stone structures

Agricultural vernacular structures

STAN MADRA

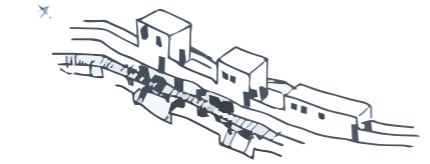


Stan Typology • Masterplan

The project draws from the traditional “stan” typology, where spatial structures **emerge from topography** following dry-stone support walls, forming enclosures and spaces across the terrain. Architecture is not imposed, but emerges from and continues the ecological and spatial logic of the land.

This logic is extended through a **water system** that collects and directs rainfall into channels, pools, and karst wetland habitats. These support biodiversity, sustain planting, and operate as distributed wildfire mitigation infrastructure.

The landscape is structured through **holm oak stands** and native Mediterranean species, including aromatic plants typical of **karst meadow environments**.



Landscapes
Art
Urban Design

2016

📍 Okučani, Croatia

Memorial Park - Operation Flash

Competition - Honourable mention

Co-author / Lead Concept Designer

The proposal transforms the existing park into a **memorial landscape**, preserving its **arboretum** and spatial character while embedding new layers of meaning. Rather than introducing a singular monument, the project is conceived as a **field of remembrance**.

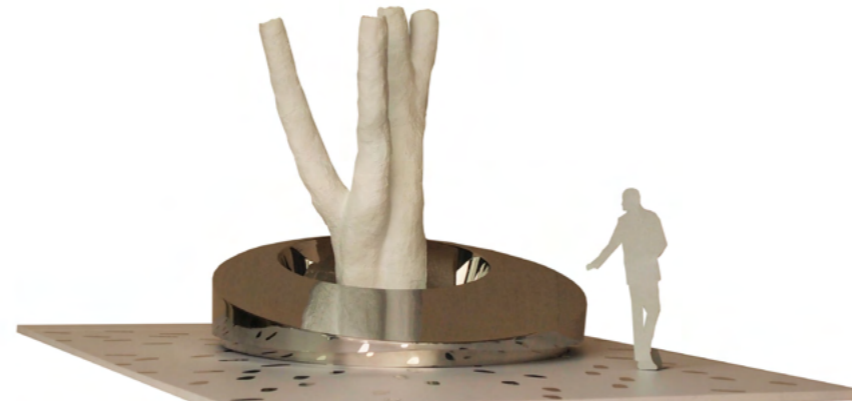
At the centre stands the existing **linden tree**, positioned at the intersection of the town's main streets. As a symbol of life and continuity in Slavic tradition, it becomes both the spatial and cultural anchor of the memorial.

Encircling the tree, a **reflective steel plinth** forms a threshold; a place of gathering, passage and reflection.

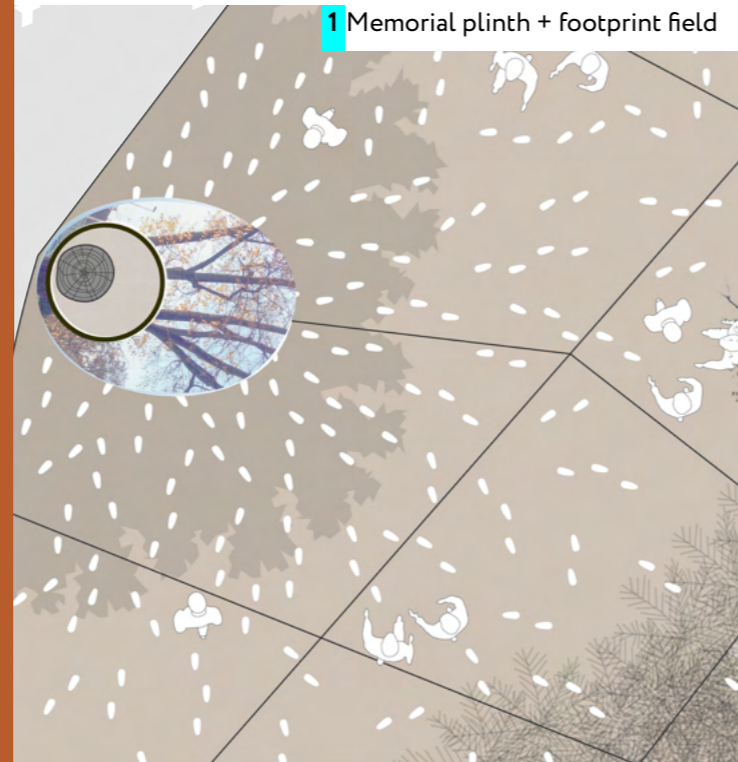
From this point, a series of subtle interventions extend outward. **Imprinted paths** trace individual trajectories across the square, forming a quiet register of presence and absence. These elements are both **grounded and ephemeral**; at once part of the surface and reflective of the life around them. Beyond the square, a **historic boat** is set within a recreated field of tall grass, introducing a second, more distant register of memory.



1 Linden tree > symbolic centre



1 Memorial plinth + footprint field



1



2 Grassland field > boat memorial



Landscapes
Art
Urban Design

2016

Okučani, Croatia

Memorial Park - Operation Flash

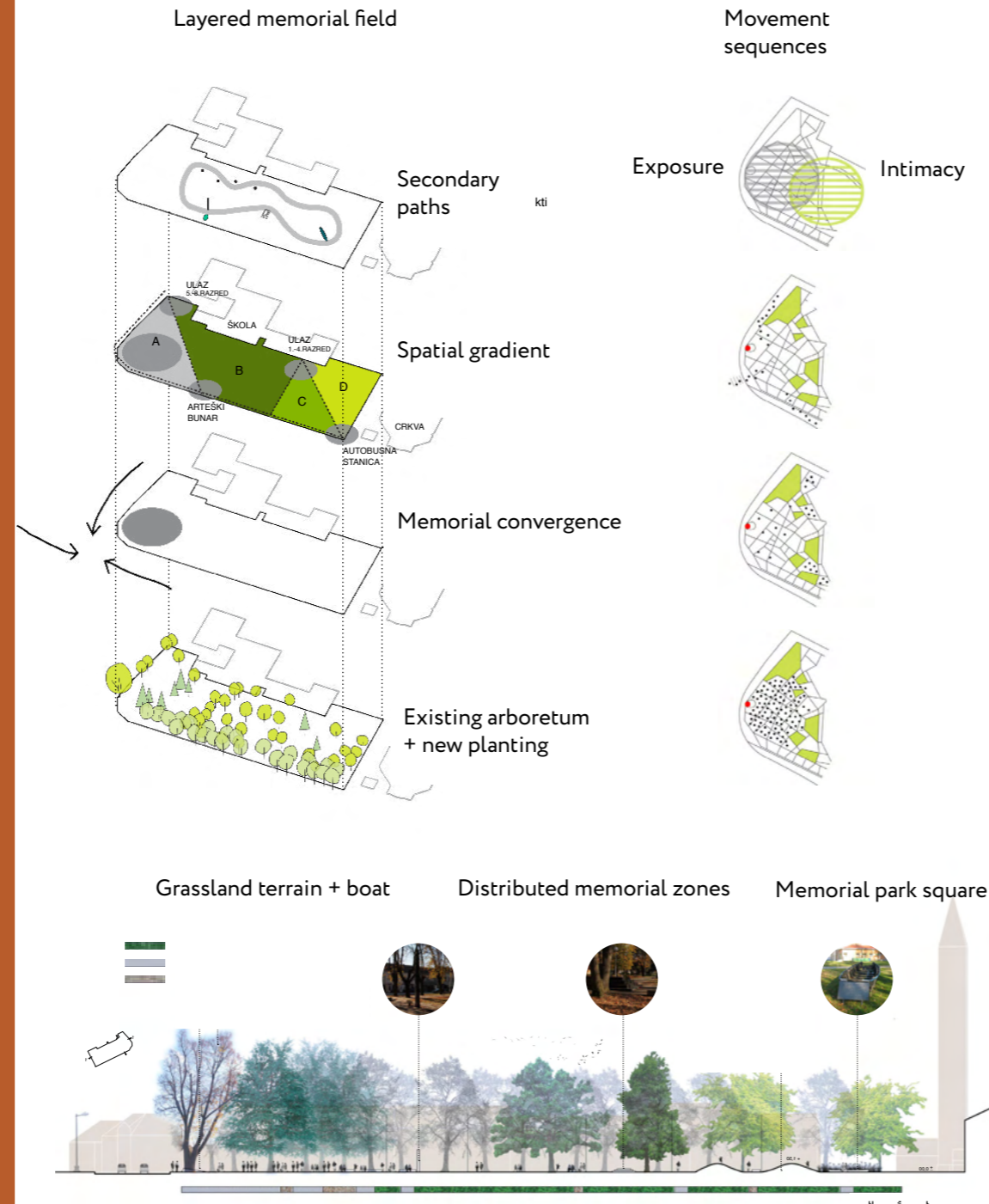
Competition - Honourable mention

Co-author / Lead Concept Designer

The proposal is structured through a clear spatial gradient, organising movement from the open **civic square** toward more enclosed and **contemplative zones**. Existing pedestrian flows are retained as primary routes, while secondary paths introduce slower, more reflective sequences across the site.

The memorial is **distributed** rather than centralised, with interventions embedded within the existing arboretum and extended through new planting. Together, these elements form a continuous **landscape system** supporting varied modes of occupation; gathering, passing through and dwelling.

On the plinth, a **poem by Grigor Vitez is inscribed**; a writer of both **Croatian** and **Serbian** heritage. This establishes a deliberate gesture of **connection**, situating the memorial within a shared cultural space that transcends division.



Landscapes
Art
Urban Design

2023

📍 Opatija, Croatia Waterfront & Central Square

Competition - 4th Prize

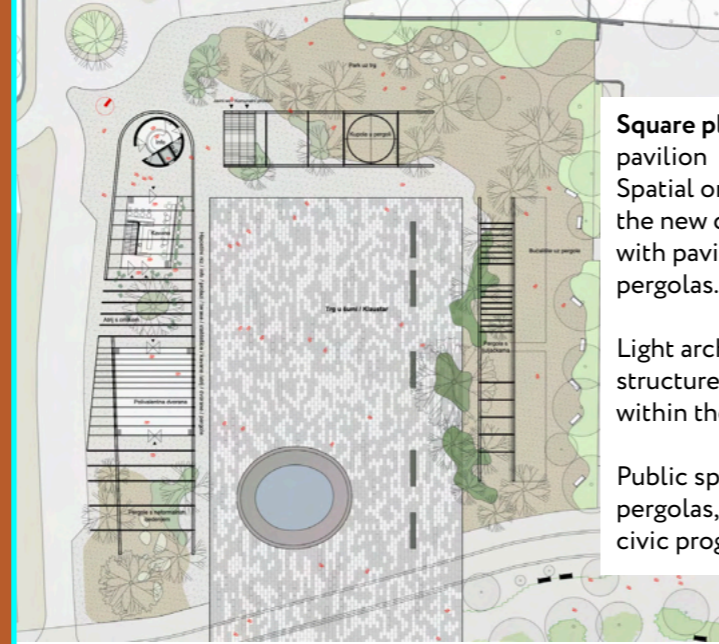
Co-author / Lead Concept Designer

The design organises the waterfront into three interconnected spatial systems: **the civic square, the park promenade and the beach landscape.**

The square forms the new **urban centre** of Opatija, **framed by park vegetation** and open views towards the Kvarner Gulf.

A gently **meandering promenade** extends the Lungomare, creating shaded walking routes and **connecting** existing parks with the waterfront.

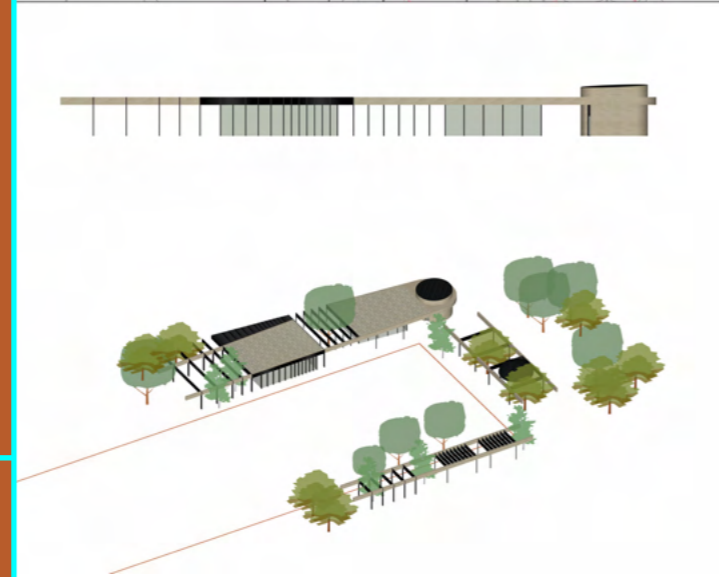
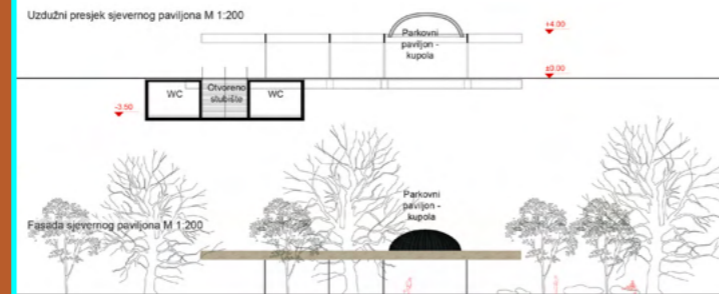
Along the coast, terraces, bathing platforms and small piers provide multiple ways of **inhabiting the edge** between land and sea while maintaining the natural morphology of the shoreline.



Square plan & Park pavilion
Spatial organisation of the new central square with pavilions and pergolas.

Light architectural structures are integrated within the landscape.

Public space framed by pergolas, vegetation and civic programs.



Pančera terrace & Beach landscape
Commercial and recreational spaces integrated into the coastal structure. Bathing platforms and infinity pool integrated into the shoreline.

Landscapes
Art
Urban Design

2023

📍 Opatija, Croatia

Waterfront & Central Square

Competition - 4th Prize

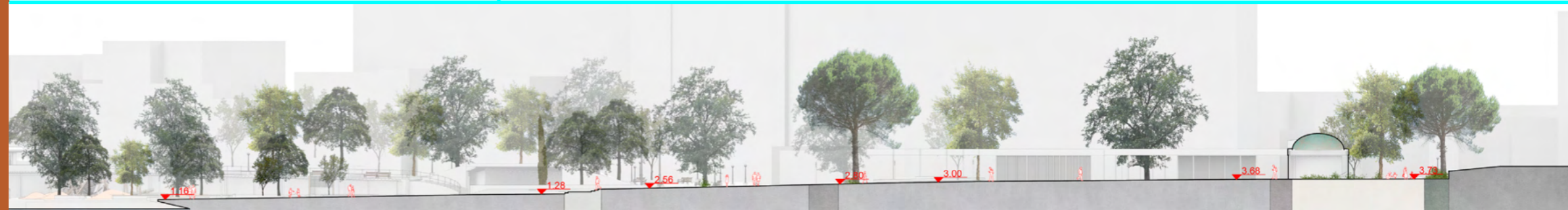
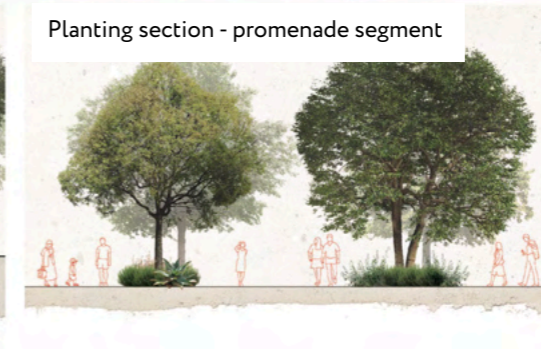
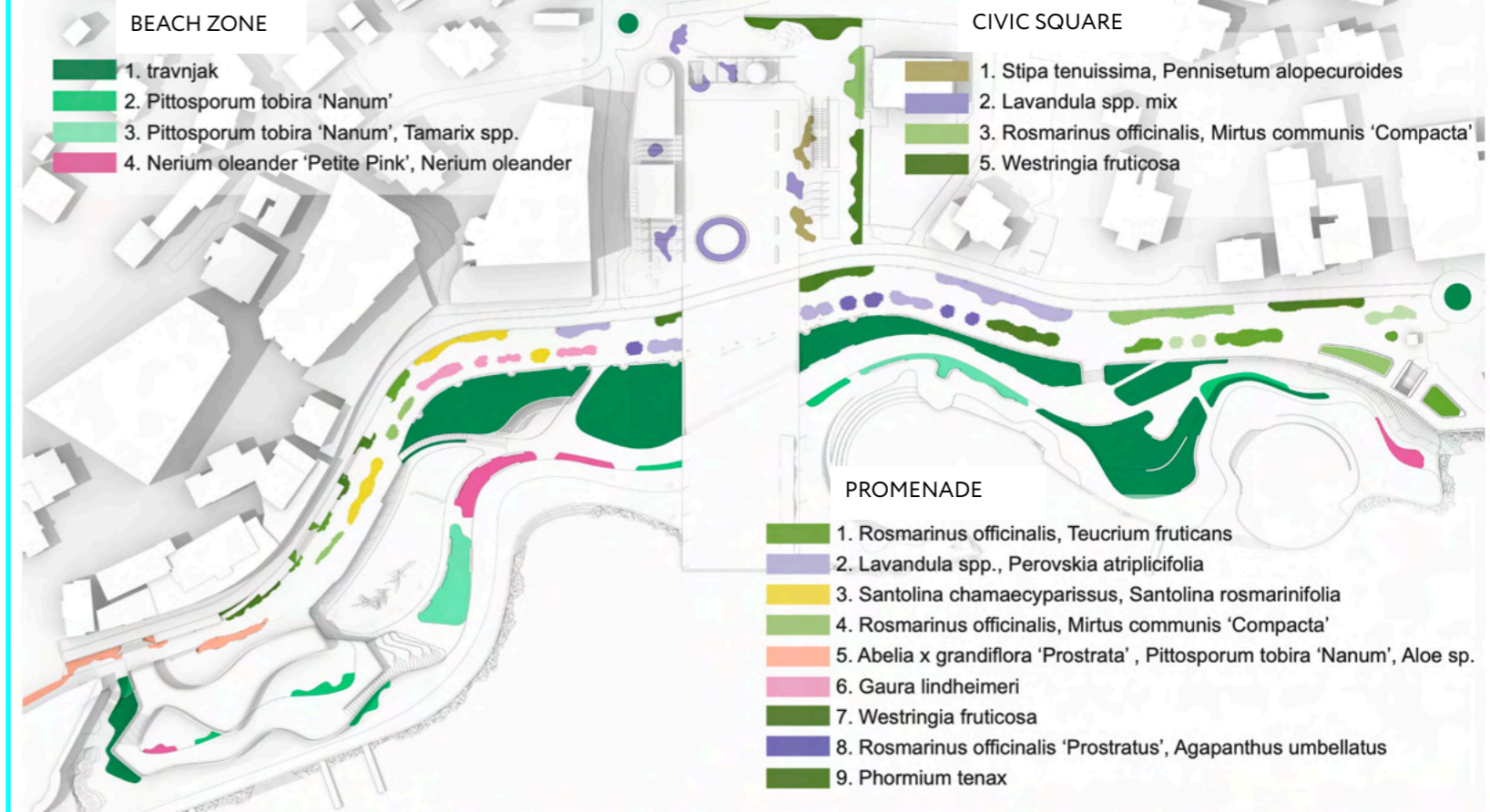
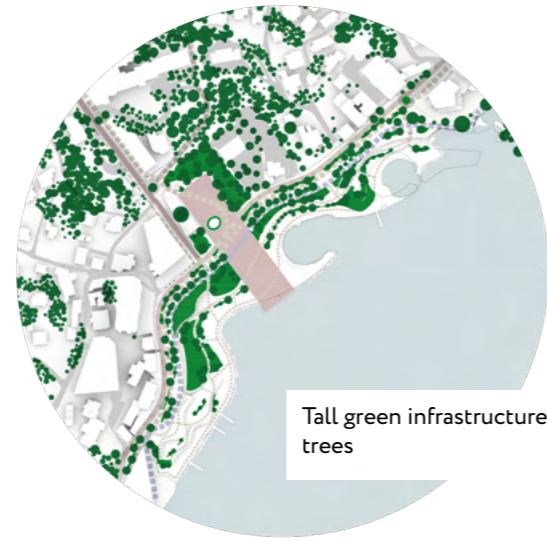
Co-author / Lead Concept Designer

The proposal integrates a **transport strategy** with the **landscape framework**, reorganising traffic flows and introducing a new roundabout system at the entrance to the central square. Phased implementation allows gradual transformation while maintaining continuity of movement and access.

Movement is structured across layers, separating vehicular traffic, pedestrian routes and the coastal promenade, while reinforcing connections between the town centre, park and waterfront.

The landscape strategy **extends the coastal forest** toward the square and beach. Taller tree planting establishes continuous green infrastructure, while lower Mediterranean vegetation introduces seasonal variation in colour, texture and scent.

Planting draws from **local species** and Opatija's **arboretum tradition**, creating a layered landscape that evolves through seasonal change and supports a rich public realm.



Residential Architecture



Residential Architecture

2022

House Sali

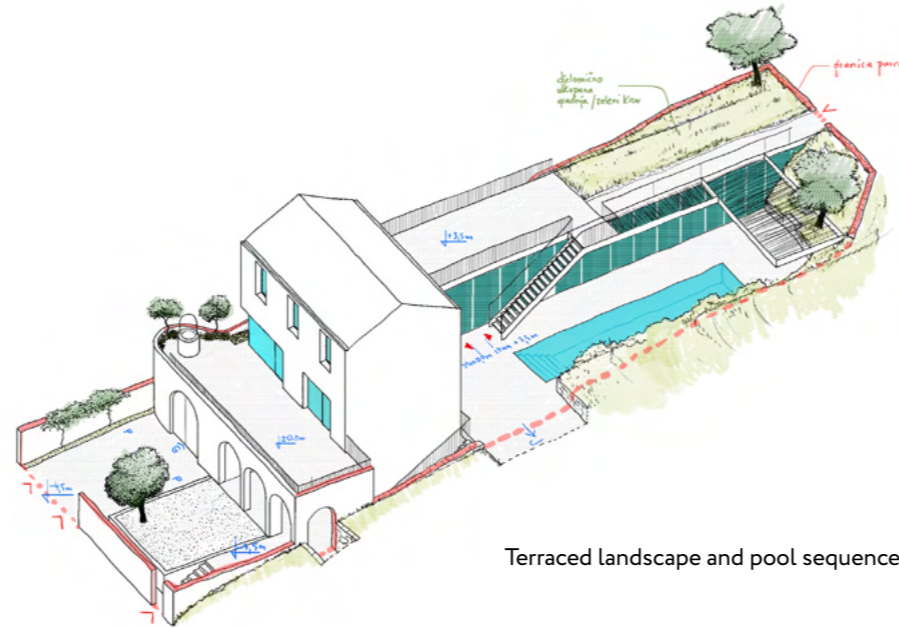
📍 Dugi Otok, Dalmatia, Croatia

Ongoing
RIBA Stages 0-3
Architecture • Landscape Design

Lead Designer

The plot lies within a conservation area where certain elements, such as pitched roofs, are mandatory. The design draws inspiration from the **Renaissance country villas surrounding Dubrovnik**, traditionally positioned within the landscape to harness rainwater, sun and prevailing winds.

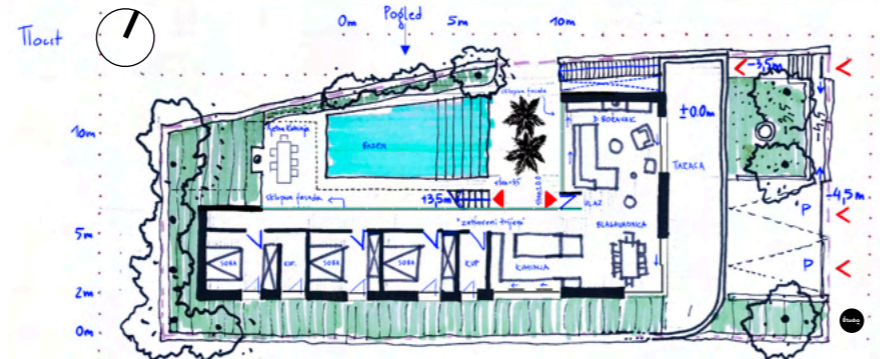
While the house remains typologically **harmonious with the surrounding context**, the landscape-integrated extension is **unapologetically contemporary**, expressing a clear dialogue between local vernacular and present-day architecture.



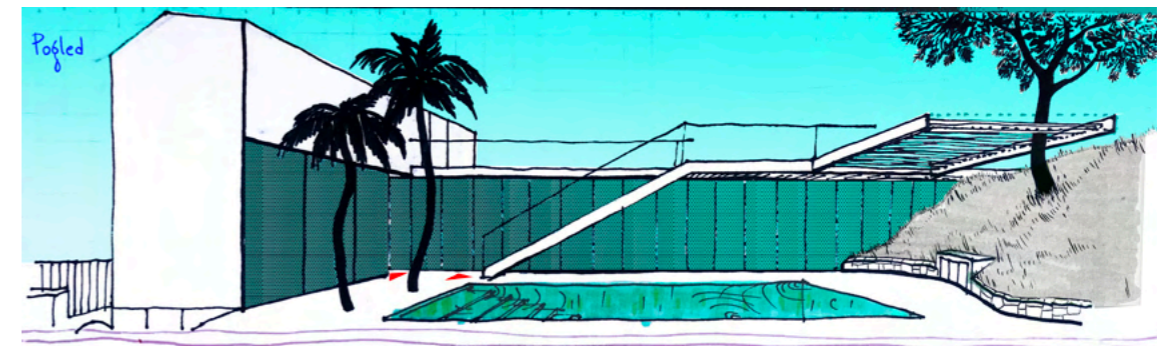
Terraced landscape and pool sequence



Courtyard and pool within planted enclosure



Ground floor plan with landscape integration



Elevation: pool, terrace and retaining wall

Residential Architecture

2022 -

House Zaglav

📍 Dugi Otok, Dalmatia, Croatia

Ongoing
RIBA Stages 0–5
Architecture • Landscape Design • Interior

Lead Designer

The house is conceived as a careful intervention within the **steep coastal terrain** of Dugi Otok.

Rather than placing a singular object on the site, the design unfolds as a **sequence of terraces, courtyards** and retaining structures that integrate architecture, landscape and the micro-urbanism of the plot.

Developed through close dialogue with the client and research into Mediterranean **bioclimatic principles**, the project brings together traditional spatial strategies and contemporary construction.



Residential Architecture

2022 -

House Zaglav

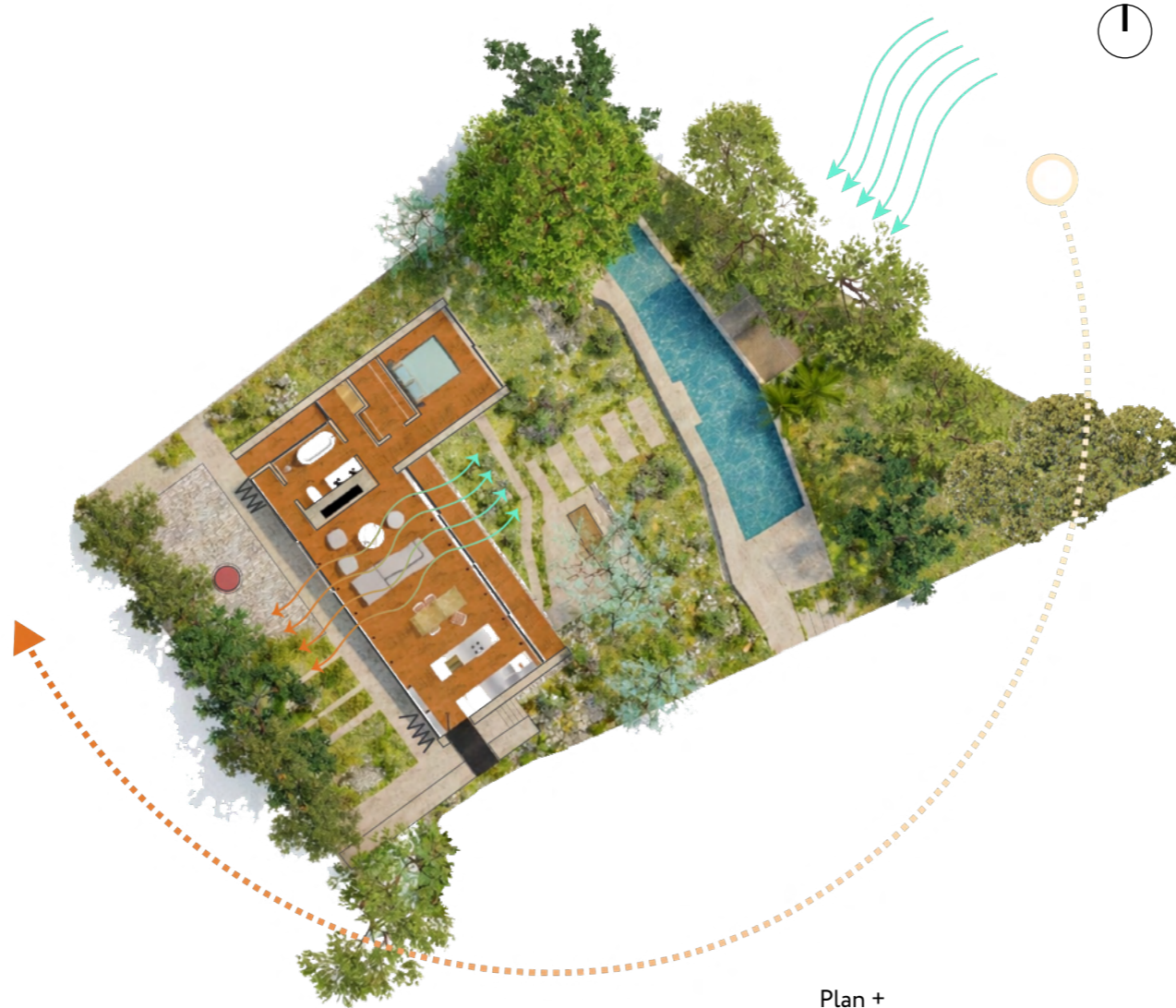
Environmental Strategy

The **south-west courtyard** reinterprets the traditional Dalmatian domestic courtyard, organised around **citrus trees** and a central **water element**.

A well and rainwater cistern collect water from the roofscape, creating both a practical reservoir and a climatic device within the house.

In summer the courtyard warms and **draws cooler air** from the shaded north-east garden through the interior, supporting natural ventilation.

The sloping garden is structured with native vegetation including **holm oak, carob tree, pine, mastic tree, strawberry tree, viburnum, bay laurel, rosemary, lavender, thyme and sage**.



Plan +
Cooling Diagram



South-west façade,
shading screen closed



South-west façade,
shading screen open



North-east elevation

Residential Architecture

2022 -

House Zaglav

Material and Climate Response

The south-west façade incorporates a perforated screen inspired by the **Mashrabiya** tradition found across the Mediterranean and Middle East. In summer the screen remains closed, filtering sunlight while allowing **air circulation** and shading the interior.

In winter the screen opens to admit low sun that warms the polished concrete floor, which acts as **thermal mass**. The structure follows a traditional Dalmatian logic: heavy outer walls of concrete and stone provide thermal stability, while a lighter steel and timber roof structure spans the interior spaces.



In Progress



Residential Architecture

2016 - 2021

House J

📍 Krupa, Velebit Nature Park, Croatia

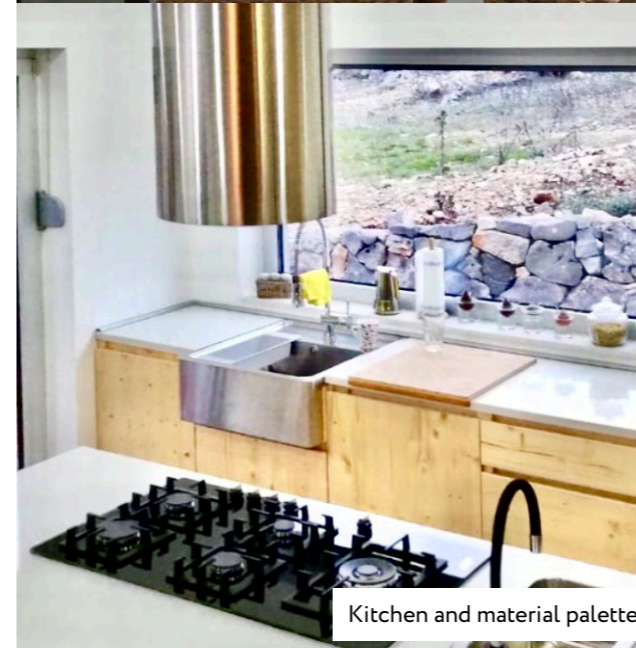
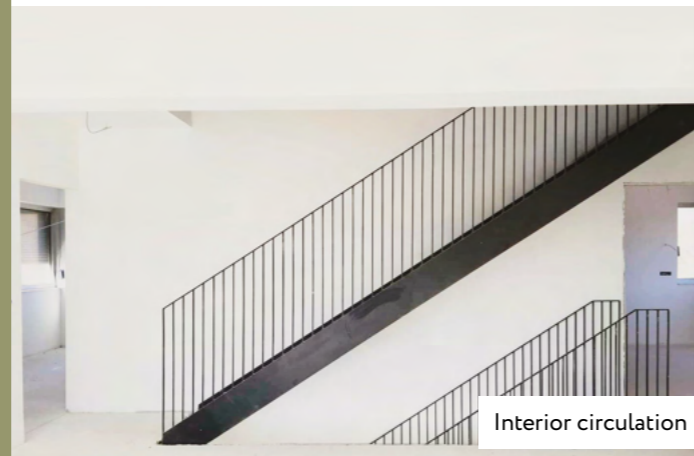
Completed
RIBA Stages 0–5
Architecture • Landscape Design • Interior

Lead Designer

House J is located in Krupa village on the southern slopes of Velebit, within a karst landscape near the source of the Krupa river.

The house replaces an unfinished structure, retaining its original footprint and roof form in response to local regulations. Within these constraints, the project develops a compact three-storey dwelling organised around an open-plan ground floor, where kitchen, dining and living spaces extend directly into the landscape.

The design draws on existing site conditions, establishing continuity between interior and exterior and transforming the ground level into a sheltered outdoor living space. Material selection is restrained, following local vernacular logic, with tones calibrated to sit within the surrounding terrain.



Mixed-Use Residential

2016 - 2018

Veslačka Building

📍 Zagreb, Croatia

Completed
RIBA Stages 0-5
Architecture • Landscape Design • Interior

Architectural Designer • Co-Lead

Developed within a collaborative studio I co-led, the project organises a **complex residential programme** into a continuous built form, balancing density with clarity of layout.

The ground floor is deliberately opened to the **public realm**, establishing permeability and shared use, while parking and servicing are accommodated below ground to prioritise a clear and **active street interface**.

The building is conceived as **environmentally responsive**, integrating passive strategies with ground-source heating and cooling. Architectural, landscape and interior strategies are integrated to form a coherent spatial system rooted in its context.



Residential Interior

2019

Apartment D Zagreb, Croatia

D

Completed
RIBA Stages 0–5
Architecture • Interior

Architectural Designer

Located in an **early modernist** apartment building in central Zagreb, the project reworks the interior while preserving the original enfilade of the flat.

The intervention involved a complete reconfiguration of the plan, with storage, services and utilities are absorbed into a **continuous line of full-height joinery**, freeing the living spaces and reinforcing the longitudinal logic of the plan.

Custom-designed kitchen and furniture elements are integrated throughout, while **reclaimed** oak flooring and hand-finished surfaces lend warmth and material depth to the interior.



Public Interior

2017

Korica Artisan Bakery

📍 Zagreb, Croatia

Completed
RIBA Stages 0-5
Architecture • Interior

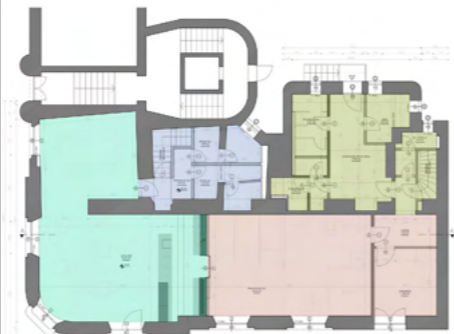
Architectural Designer

Located within a listed building in central Zagreb, the project introduces city's **first artisan bakery**, combining production and public space within a single spatial sequence.

The bakery is deliberately exposed to the street, making the process of bread-making visible and establishing a direct relationship with the public realm.

Existing elements, including the distinctive red window frames and terrazzo flooring, are retained and reinterpreted, anchoring the project within its **urban memory**.

The interior is conceived as a cohesive environment, with all furniture, lighting and fittings custom-designed, and wall surfaces treated with hand-painted patterns developed specifically for the space, integrating craft, material and spatial identity into a **unified whole**.





Selected work 2017 - 2026



Analog photographs, Yashica 1979